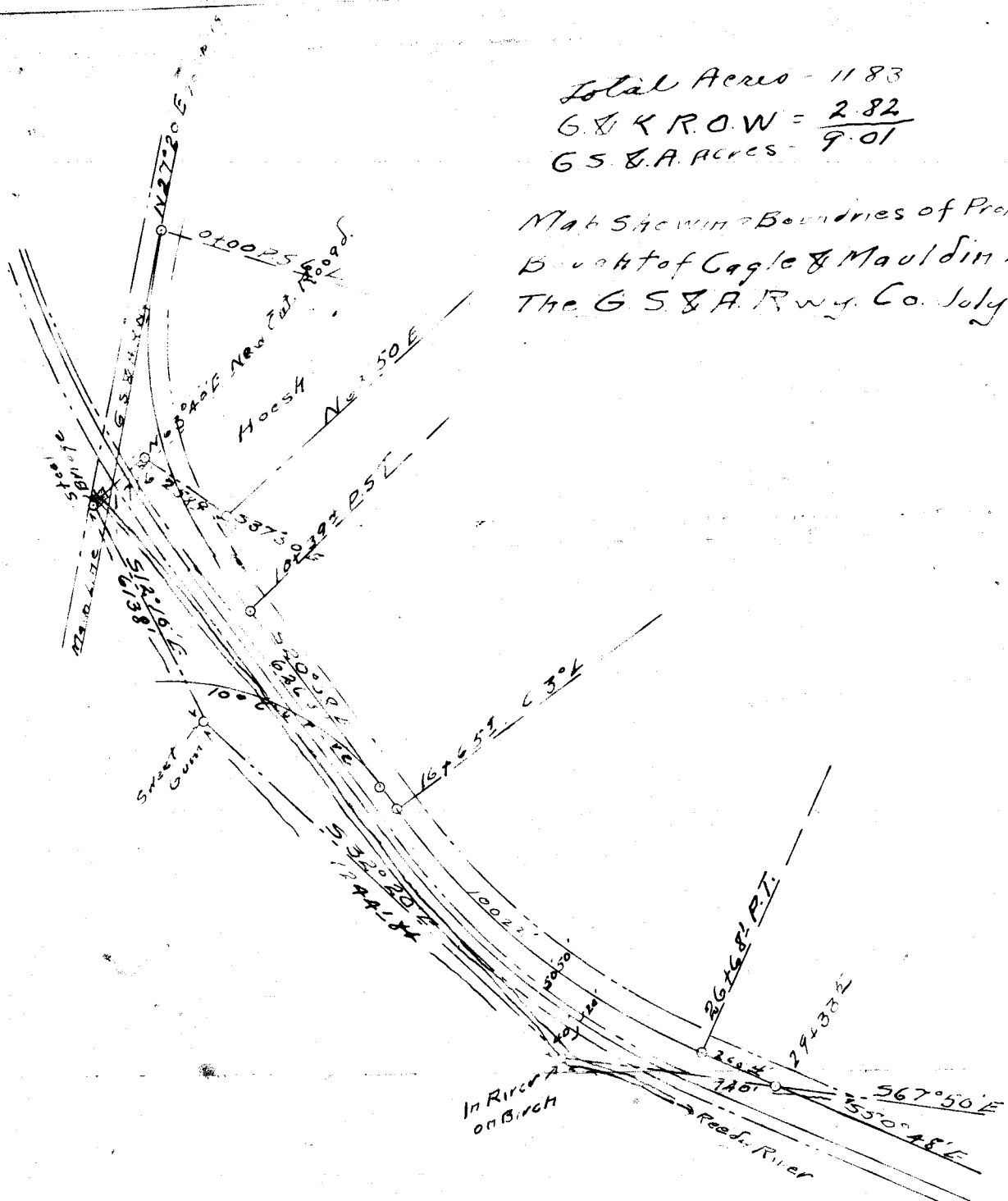


Total Acres - 1183
 G. & K. R.O.W. = 2.82
 G.S. & A. Acres = 9.01

Map Showing Boundaries of Property
 Bought of Cagle & Mauldin by
 The G. S. & A. Rwy. Co. July 1911.



Correct:
 J. W. Hughes, Res. Eng.
 W. H. Adams for Mauldin & Cagle

PLAT SHOWING
 LAND BOUGHT BY G. S. & A. RY. Co.
 FROM CAGLE & MAULDIN
 By deed of July 27th 1911
 Recorded in Book Vol. 10, page 5

Plat recorded 8/21/11 by E. R. Horton, Jr